



TRAIN CLIMAVER®

Self-supporting pre-insulated HVAC duct system for trains

TRAIN CLIMAVER® is a high density rigid mineral wool slab with shiplaps, faced externally with a reinforced kraft aluminium foil and internally with a black glass fabric of high tensile strength and resistance for cleaning methods according to UNE 100012.



Fire reaction
EN 45545-2 - HL3 compliant



Acoustics
Improved acoustic comfort due to its excellent sound absorption and sound insulation properties



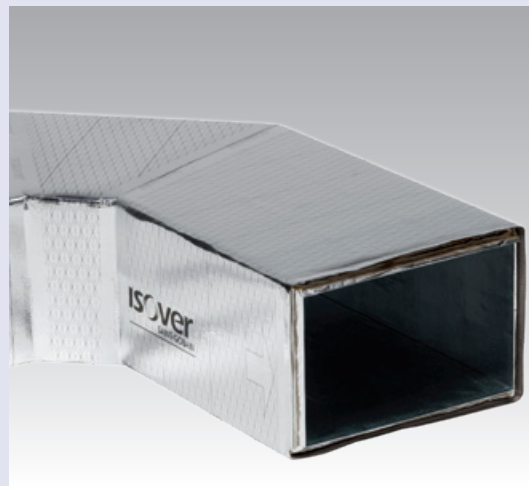
Thermal insulation
Excellent thermal insulation



Ease of maintenance
Resistant black glass fabric to allow cleaning and high level of air quality



Fast installation
One single operation;
Straight Duct Method (SDM) for easy cutting; Lightweight system



ISOVER-TRAIN CLIMAVER 2018-01





Self-supporting pre-insulated HVAC duct system for trains

Characteristic	Symbol	Unit	Quantities and measured values					Standard	
Application field	-	-	TRAIN CLIMAVER® slabs for assembling self-supporting ducts for heat and cold air distribution inside trains and railway rolling stock, specially indicated for high acoustic insulation and fire safety requirements.					-	
Thermal conductivity	T	[°C]	10	20	40	60		EN 12667	
	λ	[W/(m·K)]	0.032	0.033	0.036	0.038			
Reaction to fire	-	-	EN 45545-2 (R1): HL3 compliant (CIT = 0.00). Summary of results upon request.					EN 45545-2	
			British Standard BS: Class Ia, Ib and II.					BS 476-Part 6 and 7 BS 6853 - 1999	
			MO - F1.					NF F 16-101	
			Non-combustible Euroclass A2, s1-d0.					EN 13501-1	
Acoustic absorption	-	Hz	125	250	500	1000	2000	4000	ISO 354
	α	-	0.05	0.25	0.70	0.90	0.90	0.95	
	α _w	-	0.55						
Water vapour resistance	-	m ² ·h·Pa/mg	100 (Kraft Aluminium face).					-	
Thermal behaviour	-	-	Up to 290 °C in the black glass fabric face. In the aluminum face we recommend no more than 100 °C.					EN 14706	

Delivery form: Standard dimensions / packaging information					
Dimensions [m]		Thickness [mm]	m ² /package	m ² /pallet	m ² /truck
Lenght l	Width b				
3.00	1.19	25	24.99	299,88	2399

Products must be stored inside, in a dry and clean location.

www.isover-technical-insulation.com

The technical information corresponds to our present state of knowledge and experience at the date of printing (see imprint). But no legal guarantee can be given, unless it has been explicitly agreed. The state of experience and knowledge is developing continuously. Please see to it that you always use the latest edition of this information. The described product applications do not take special circumstances in consideration. Please verify whether our products are appropriate for the concrete application. For further information please contact our Isover sales offices. We deliver only according to our terms of trade and terms of delivery.

SAINT-GOBAIN ISOVER · "Les Miroirs" · 18, avenue d'Alsace · 92400 Courbevoie · France

